



Chronicle House, Chester Street, Shrewsbury, SY1 2DJ

Investment Opportunity—£725,000 Freehold

Chronicle House, Chester Street, Shrewsbury, SY1 2DJ

Coopergreenpooks.co.uk

£725,000 Freehold—Investment Opportunity

[Coopergreenpooks.co.uk/property/29711](https://coopergreenpooks.co.uk/property/29711)

Offering an exciting investment opportunity, this converted freehold building of character has been split into 6 modern apartments. The property is available to purchase as a residential investment block with tenants currently in situ providing a stable rental income. Located within the heart of Shrewsbury town centre adjacent to the Railway Station, the development has been finished to a high standard throughout.

KEY FEATURES

- Apartment 1 - 2 bedroom first floor apartment with views to front. Currently achieving £695 PCM
- Apartment 2 - 1 bedroom first floor apartment. Currently achieving £550 PCM
- Apartment 3 - 2 bedroom first floor apartment with views to rear. Currently achieving £745 PCM
- Apartment 4 - 2 bedroom second floor apartment with views to front. Currently achieving £600 PCM
- Apartment 5 - 1 bedroom second floor apartment. Currently achieving £550 PCM
- Apartment 6 - 2 bedroom second floor apartment with views to front. Currently achieving £745 PCM
- Current total rental income per annum is £46,620 representing a gross yield of 7.2%
- AST's in place for all apartments
- Agents note - Photos used are a mixture of apartments to give an idea of the interior accommodation. All apartments have been finished to the same high standard. There is currently a penthouse apartment being erected on top of the existing building which will be sold separately on a long leasehold basis. For more information please contact Cooper Green Pooks

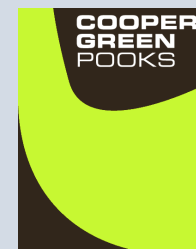
rightmove 

 onTheMarket.com

 **RICS**
Regulated by RICS

Cooper Green Pooks
3 Barker Street
Shrewsbury
SY1 1QF

www.cgpooks.co.uk



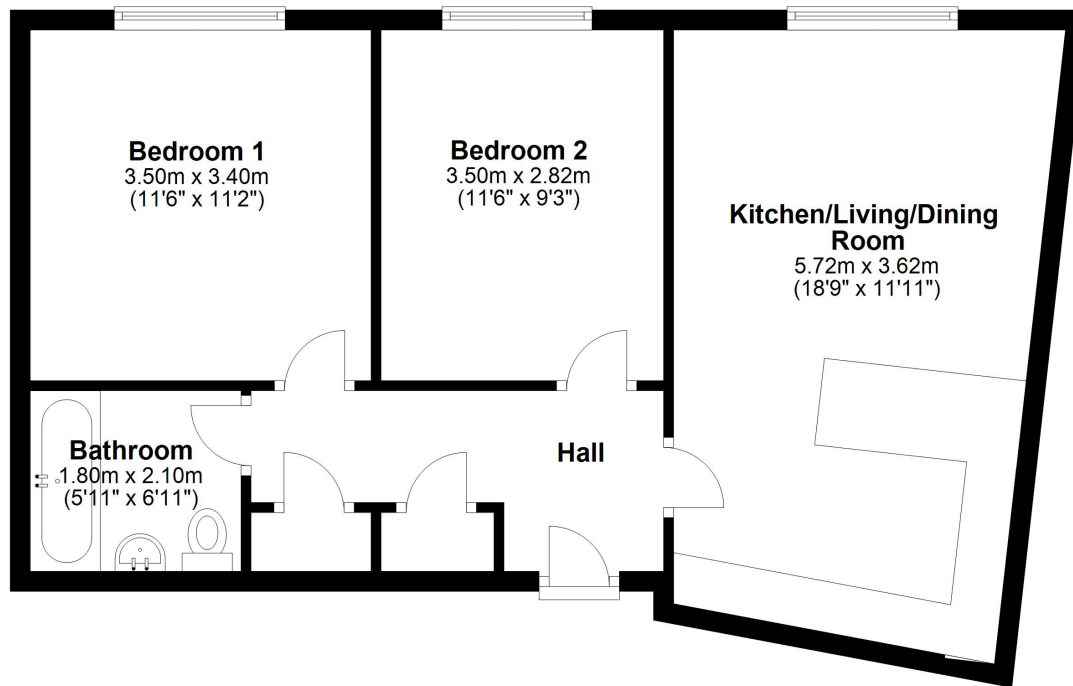
Chronicle House, Chester Street, Shrewsbury, SY1 2DJ

£725,000 Freehold—Investment Opportunity

Coopergreenpooks.co.uk/property/29711

Apartments 1 and 4

Approx. 56.1 sq. metres (603.7 sq. feet)

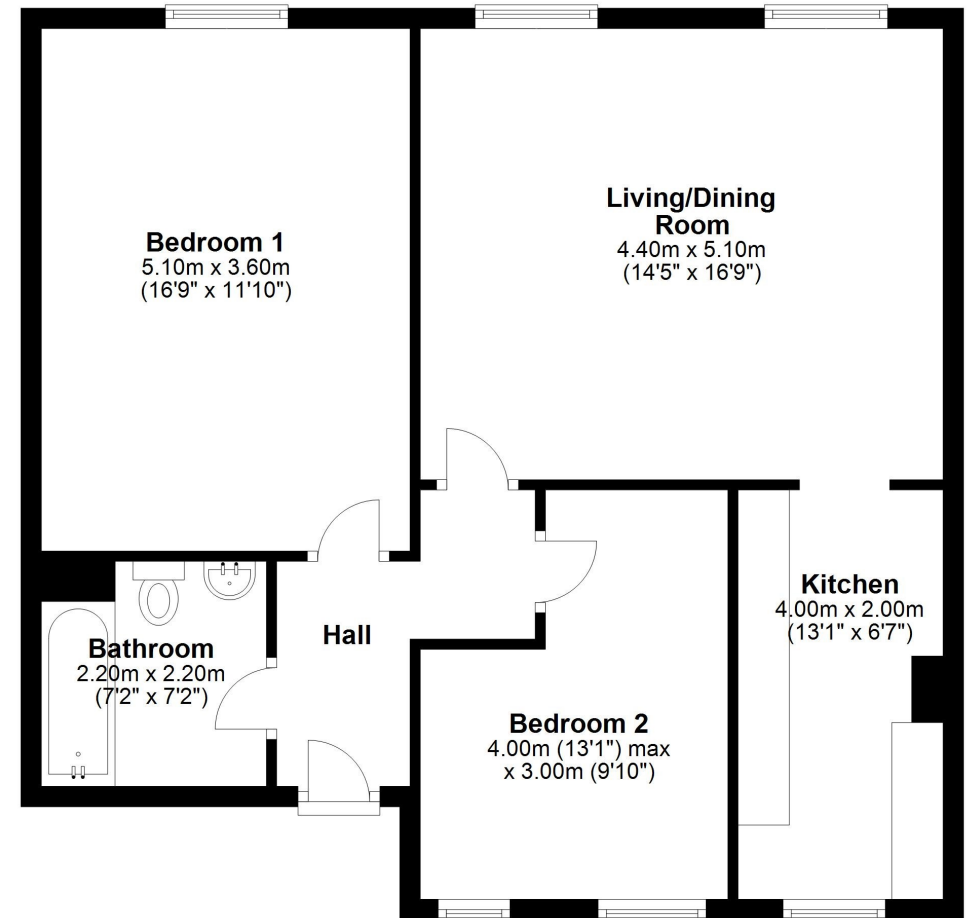


Total area: approx. 56.1 sq. metres (603.7 sq. feet)

We accept no responsibility for any mistake or inaccuracy contained within the floorplan. The floorplan is provided as a guide only and should be taken as an illustration only. The measurements, contents and positioning are approximations only and provided as a guidance tool and not an exact replication of the property.
Plan produced using PlanUp.

Apartment 3

Approx. 70.7 sq. metres (761.5 sq. feet)



Total area: approx. 70.7 sq. metres (761.5 sq. feet)

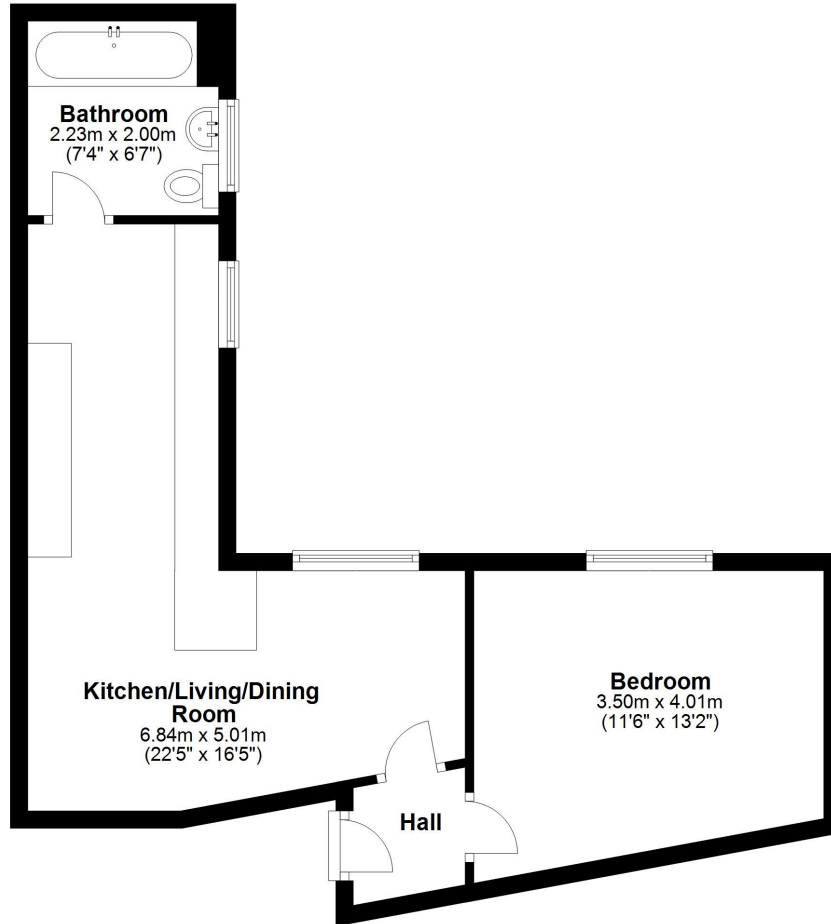
We accept no responsibility for any mistake or inaccuracy contained within the floorplan. The floorplan is provided as a guide only and should be taken as an illustration only. The measurements, contents and positioning are approximations only and provided as a guidance tool and not an exact replication of the property.
Plan produced using PlanUp.

£725,000 Freehold—Investment Opportunity

Coopergreenpooks.co.uk/property/29711

Apartments 2 and 5

Approx. 41.7 sq. metres (448.9 sq. feet)

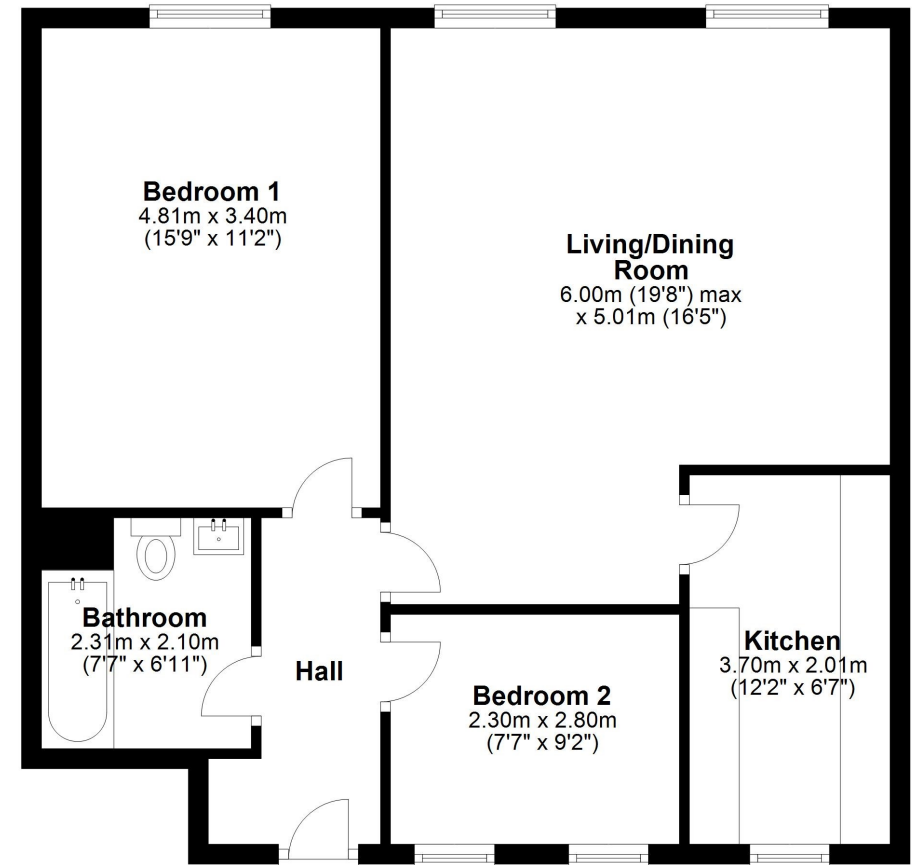


Total area: approx. 41.7 sq. metres (448.9 sq. feet)

We accept no responsibility for any mistake or inaccuracy contained within the floorplan. The floorplan is provided as a guide only and should be taken as an illustration only. The measurements, contents and positioning are approximations only and provided as a guidance tool and not an exact replication of the property.
Plan produced using PlanUp.

Apartment 6

Approx. 68.0 sq. metres (731.8 sq. feet)



Total area: approx. 68.0 sq. metres (731.8 sq. feet)

We accept no responsibility for any mistake or inaccuracy contained within the floorplan. The floorplan is provided as a guide only and should be taken as an illustration only. The measurements, contents and positioning are approximations only and provided as a guidance tool and not an exact replication of the property.

Plan produced using PlanUp.



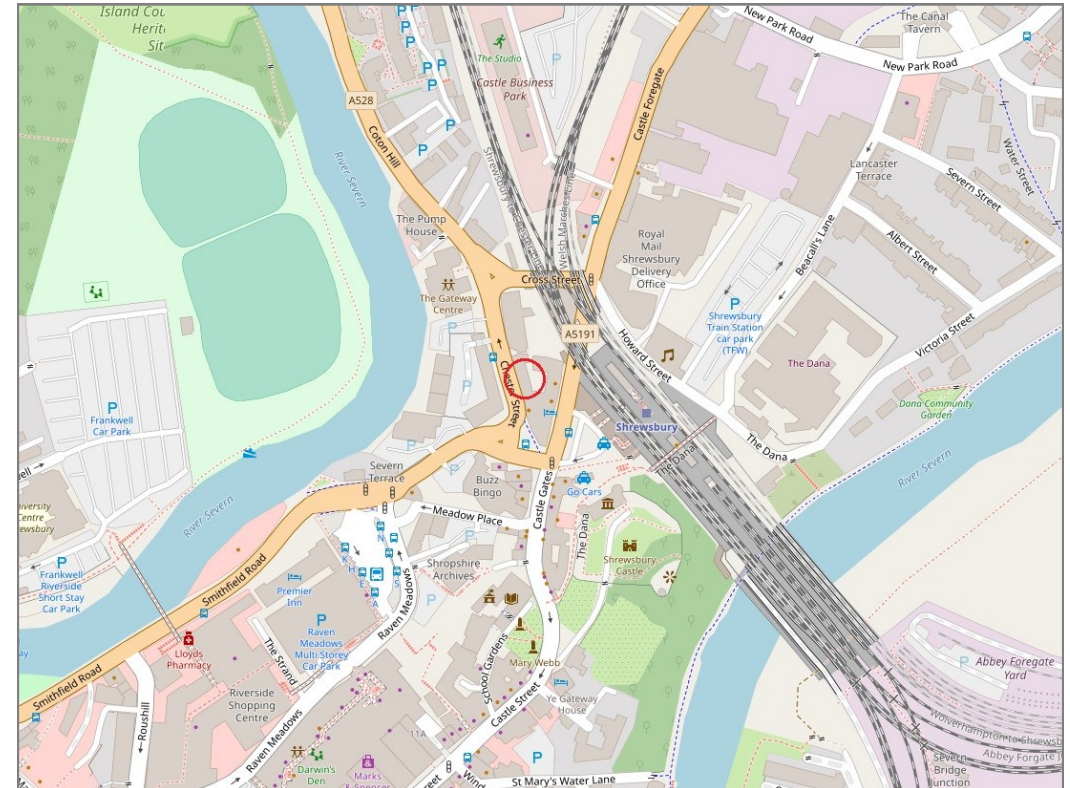
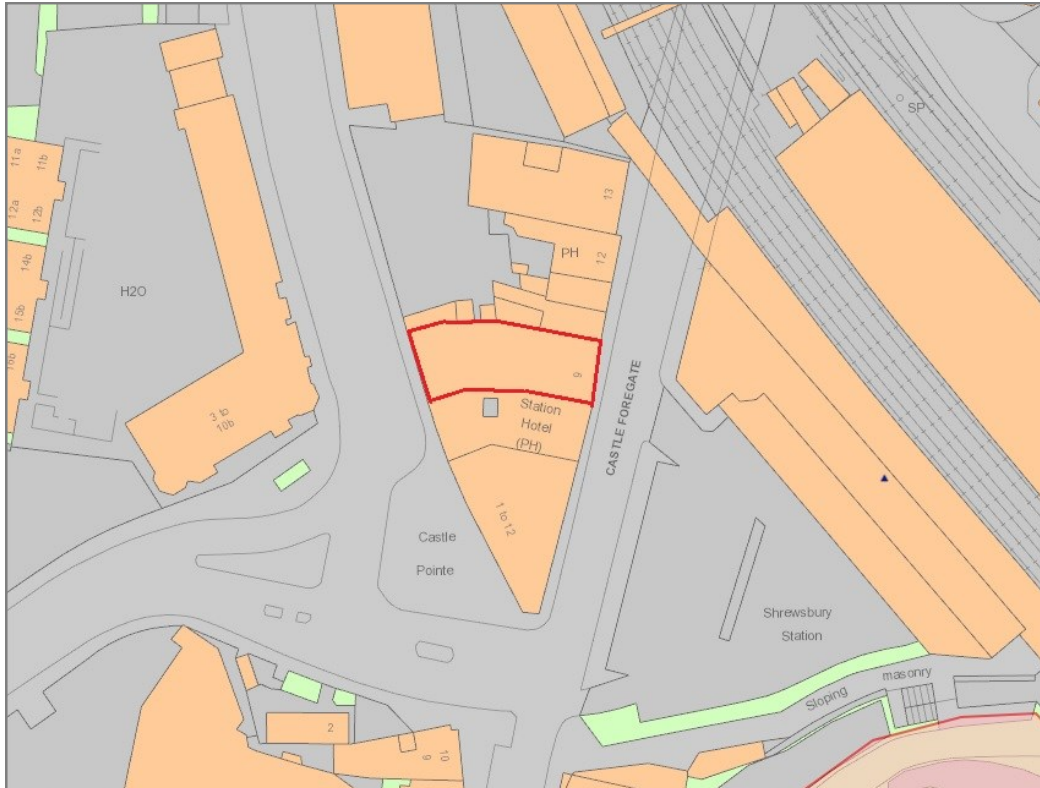




Chronicle House, Chester Street, Shrewsbury, SY1 2DJ

£725,000 Freehold—Investment Opportunity

Coopergreenpooks.co.uk/property/29711



Tenure	Freehold
Local Authority	Shropshire Council
Services	All mains services are connected

Expert mortgage advice available
3 Barker St, Shrewsbury SY1 1QF
Cooper Green Pooks
01743 276666



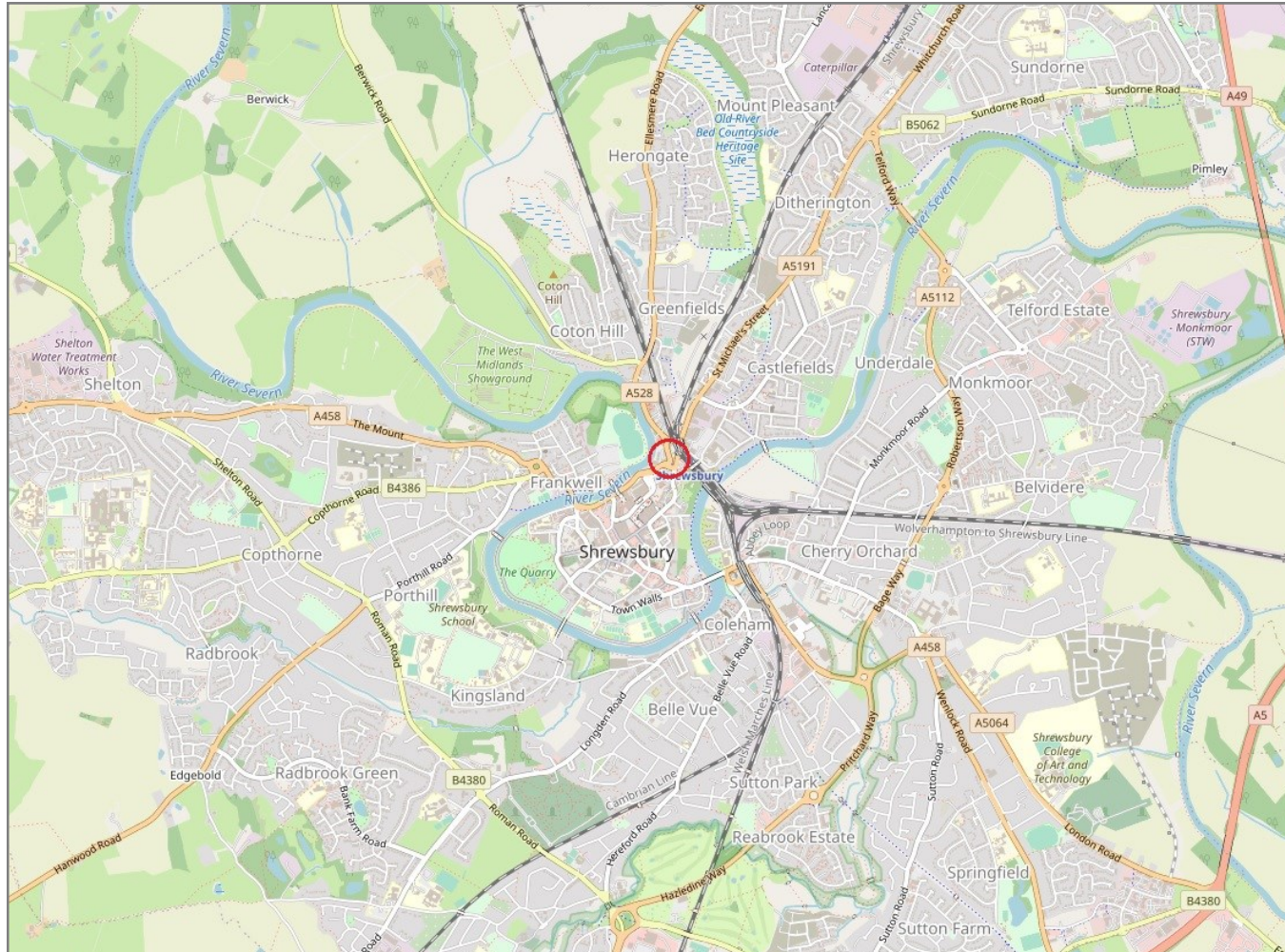
Your home may be repossessed if you do not keep up repayments on your mortgage.
There may be a fee for mortgage advice. The actual amount you pay will depend upon your circumstances. The fee is up to 1% but a typical fee is 0.3% of the amount borrowed.

Chronicle House, Chester Street, Shrewsbury, SY1 2DJ

Coopergreenpooks.co.uk

£725,000 Freehold—Investment Opportunity

Coopergreenpooks.co.uk/property/29711



IMPORTANT NOTICE: Cooper Green Pooks for themselves and for the lessors or vendors of this property whose agents they are give notice that: 1 No appliances, services or service installations have been tested and no warranty as to suitability or serviceability is implied. Any prospective purchaser or lessee is advised to obtain verification from their surveyor or solicitor. 2. The particulars are set out as a general outline only for the guidance of the intended purchasers or lessees and do not constitute, nor constitute part of, an offer or contract. 3. All descriptions, reference to condition and necessary permissions for use and occupation and other details are given in good faith and are believed to be correct but any intending purchasers or lessees should not rely on them as statements or representation of fact but satisfy themselves by inspection or otherwise as to the correctness of each of them. 4. No person in the employment of Cooper Green Pooks has any authority to make or give any representation or warranty whatsoever in relation to this property. 5. All rentals and prices are quoted exclusive of Stamp Duty, legal and surveyors fees and any other associated purchasers or lessees costs. 6. Floor plans are indicative only and should not be relied on. 7. The plan showing the boundary of the property is indicative only and has not been checked against the legal title so should not be relied on. 8. All dimensions, floor areas and site areas are only approximate and should not be relied on. Dimensions are generally maximum room dimension.